



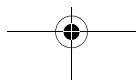
GROHE
WATER TECHNOLOGY

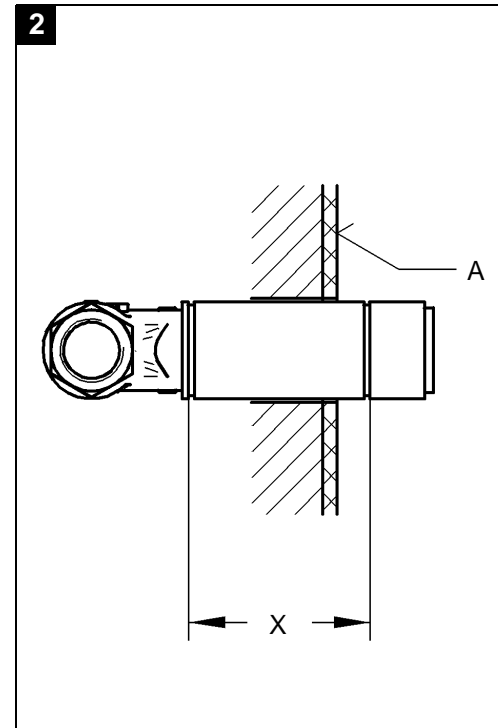
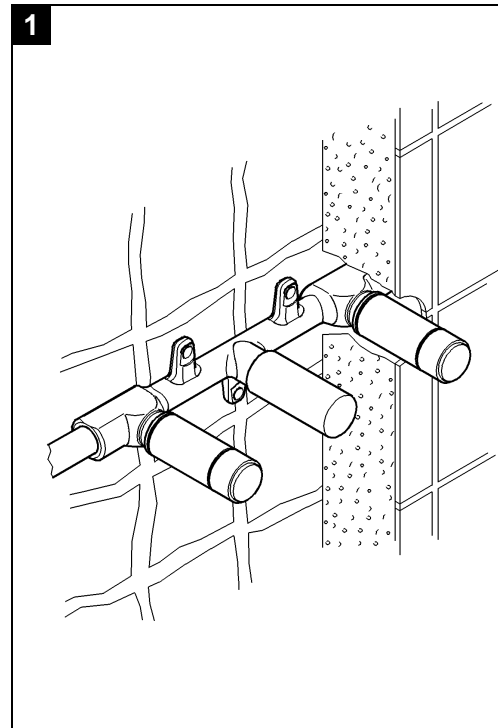
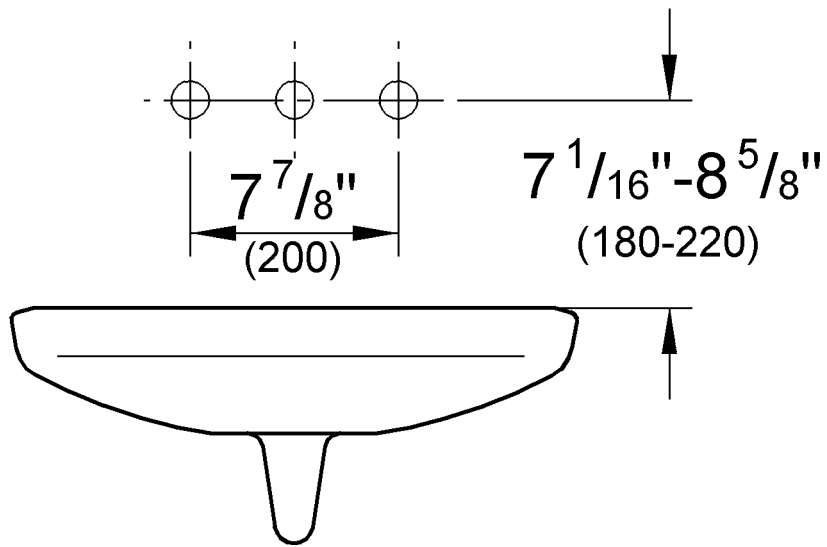
Atrio



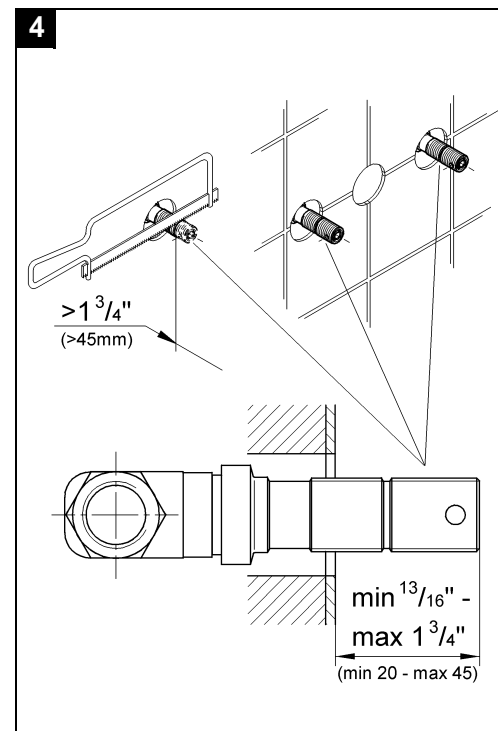
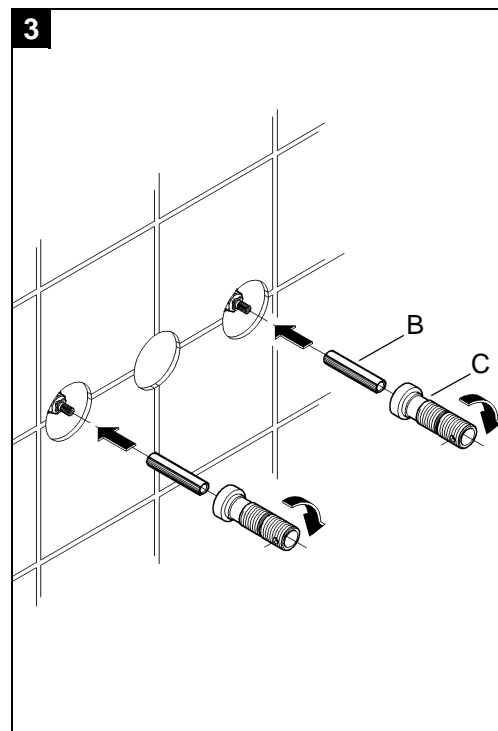
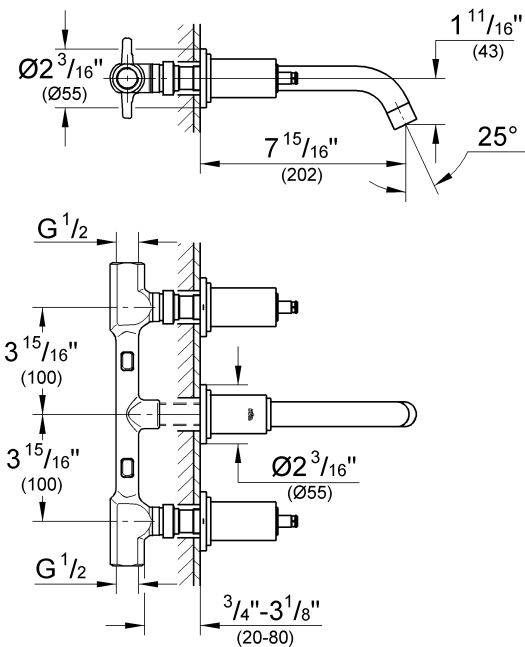
20 073

English page 1
Français page 2
Español página 3

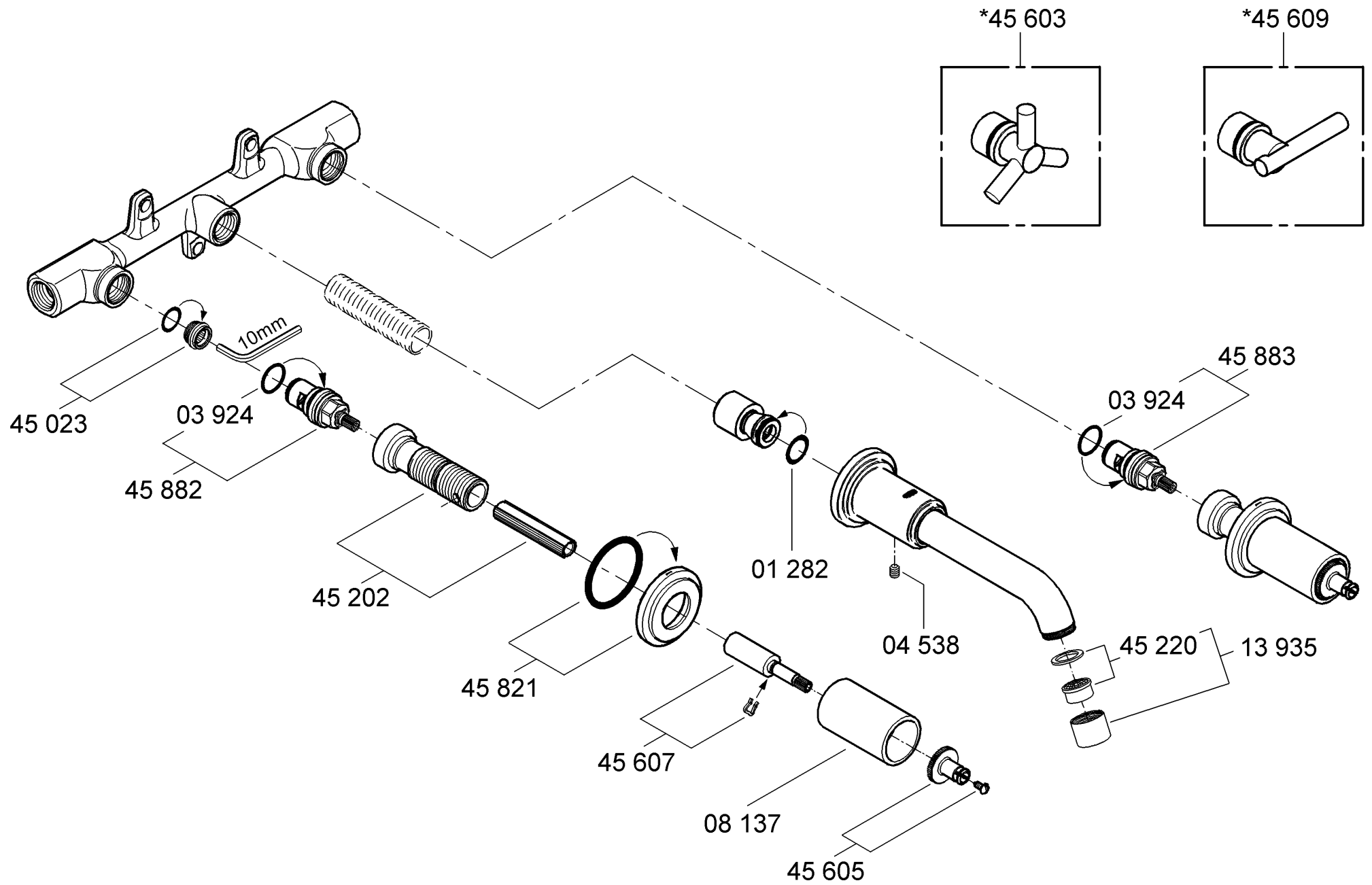




20 073



Please pass these instructions on to the end user of the fitting!
 S.v.p remettre cette instruction à l'utilisateur de la robinetterie!
 Sirvase pasar ese instrucción al utilizador de la grifería!



English

Application

Operation is possible in conjunction with:

- Pressurized storage heaters
- Thermally controlled instantaneous heaters
- Hydraulically controlled instantaneous heaters

Operation with low-pressure storage heaters (displacement water heaters) is **not** possible.

Specifications

- Max. flow 8.3 L/min or 2.2 gpm/60 psi
- Flow pressure
 - min. 7.25 psi
 - recommended 14.5 - 72.5 psi
 - greater than 72.5 psi, fit pressure reducing valve
- Max. operating pressure 145 psi
- Test pressure 232 psi
- Temperature
 - max. (hot water inlet) 176 °F
- Water connection cold - RH
hot - LH

Note

Major pressure differences between hot and cold water supply should be avoided.

Rough installation

Prepare the wall for the installation.

Prepare the holes for the wall mixer and slots for the pipes.

Refer to the dimensional drawings on fold-out page I.

Install concealed mixer housing in wall and connect pipelines, see fold-out page I, fig. [1].

Observe the correct installation position! The cold water supply must be connected on the right (marked blue on housing) and the hot water supply on the left (marked red on housing), as viewed from the operating position.

The installation depth of the finished surface of the wall (A) must lie within the area (X) of the fitting template, see fig. [2].

By using a spirit level, align the mixer horizontally, vertically and parallel to the wall.

Flush pipes thoroughly.

Open cold and hot-water supply and check connections for leakage!

Note: Do **not** remove the fitting template before final installation.

Final installation

Shut off cold and hot water supply.

Remove fitting templates.

I. Install side valves:

1. Mount spindle extension (B) on the headpart of the concealed valve and screw on extension sleeve (C), see fold-out page I, fig. [3].
2. Crosscut extension sleeve with spindle extension in that way, that the installation dimension is **min 13/16" to max 1 3/4"**, see fig. [4].
3. Push on escutcheon (D) and screw on sleeve (E) with pre-assembled snap insert. Snap on handle (F), see fold-out page III, fig. [5].

II. Install spout:

1. Screw in 1/2"NPT-adaptor (G) to concealed mixer housing, see fig. [6].
2. With 10mm socket spanner, screw in connection nipple (H).
3. Crosscut 1/2"NPT-adaptor (G) in that way, that the installation dimension is **1 5/16"**, see fig. [7].
4. Tighten the spout (J), using a 3mm socket spanner.

Open cold and hot-water supply and check connections for leakage!

Maintenance

Inspect and clean all parts, replace as necessary and grease with special grease (order no. 18 012).

Shut off cold and hot water supply!

I. Replacing the headpart, see fig. [8].

1. Unscrew complete union (K) by turning sleeve (E) and pull off escutcheon (D).
2. Unscrew extension sleeve (C) and if necessary, pull off spindle extension (B).
3. Unscrew headpart (L) using a 17mm socket wrench.
4. Change either complete headpart (L) or O-ring (M). Observe the different replacement part numbers of the headparts, see fold-out page II and III, fig. [9].

Observe the correct installation position!

II. Flow regulator, see fold-out page II.

Unscrew and clean flow regulator (13 935).

Assemble in reverse order.

Replacement parts, see fold-out page II (* = special accessories).

Care

Instructions for care of this faucet will be found in the Limited Warranty supplement.

