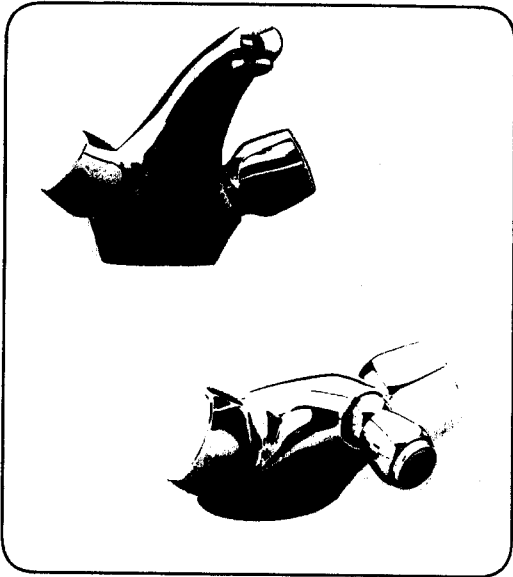




Exquisit

21 611 and 24 611

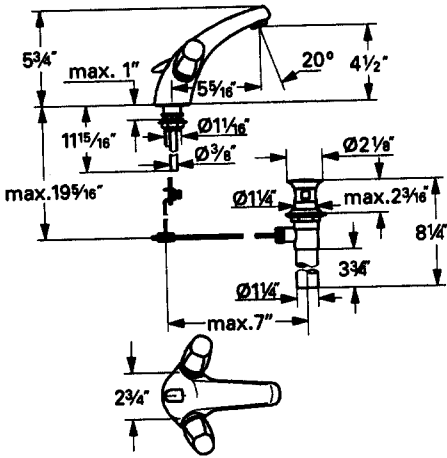
Technical Product Information



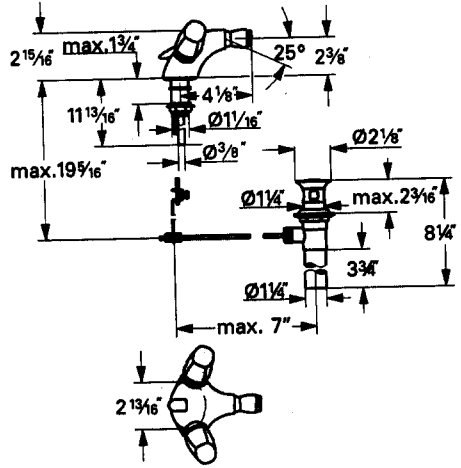
Centerset and Bidet

Installation dimensions

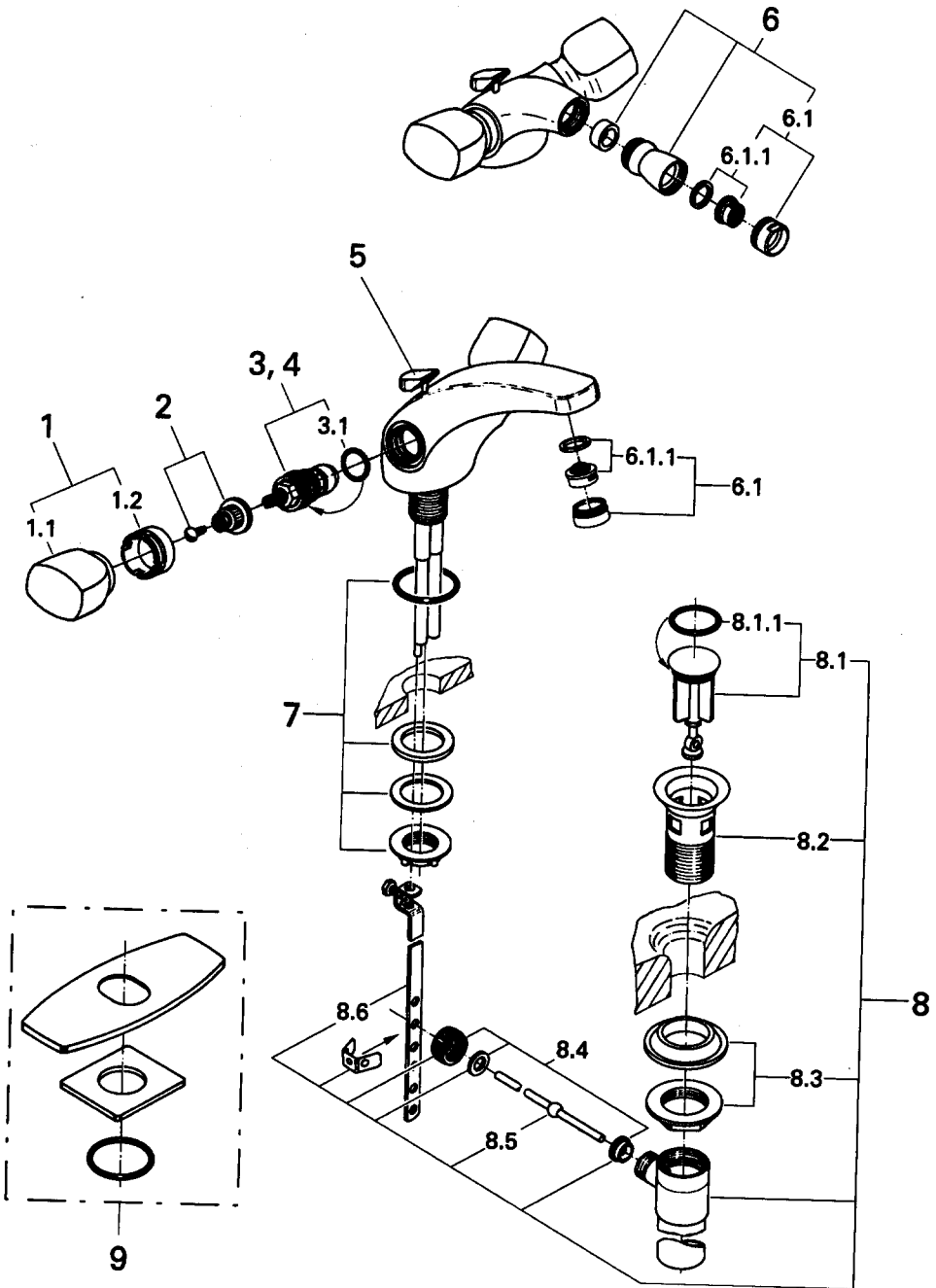
21 611



24 611



Replacement parts



Specification

Application

- Pressurized storage heaters
- Thermally controlled instantaneous heaters (set flow temperature to 120 °F)
- Hydraulically controlled instantaneous heaters (operation is however subject to certain restrictions in comfort occasioned by the function of the heater)

Operation with low pressure storage heaters (displacement water heaters) is not possible.

Specification

- Max. flow 2.2 GPM
- Flow pressure
 - min 7 p.s.i
 - recommended 15-75 p.s.i
 - greater than 75 p.s.i., fit pressure reducing valve
- Working pressure - max. 150 p.s.i
- Test pressure 230 p.s.i
- Temperature
 - max. (hot water inlet) 180 °F
 - recommended (economy setting) 140 °F
- Water connection hot - LH
cold - RH

Note

Major pressure differences between cold and hot water supply should be avoided.

Installation

Flush pipes through thoroughly

Mount centerset on lavatory

See dimensional drawing fold out page I.

Connect centerset

For this purpose the copper pipes must be fitted on to the angle stops (or other supply points).

The hot water supply should be connected on the left, the cold water supply on the right side.

Open angle stops and check function of faucet.

Check connections for leakage.

Only original **Grohe** replacement parts may be used.

Replacement parts/ Care

No.	Description	Cat. No.	Pack- ing unit	No.	Description	Cat. No.	Pack- ing unit
1	Exquisit handles, pair	18 991	2	8	Pop up waste	28 958	1
1.1	Exquisit handles	00 899	1	8.1	Stopper	45 324	1
1.2	Accent rings, pair	18 992	2	8.1.1	Stopper O-ring	01 147	5
2	Handle connection set	45 186	1	8.2	Flange	01 153	1
3	Ceramic cart. 90°, right	45 625	1	8.3	Shank nut and bushing	45 266	1
3.1	Body seal O-ring	03 924	10	8.4	Nut and bushings	45 265	1
4	Ceramic cart. 90°, left	45 626	1	8.5	Ball rod	45 264	1
5	Lift rod	45 177	1	8.6	Strap with screw	45 263	1
6	Ball joint outlet	08 979	1				
6.1	Flow regulator	13 955	1		Optional accessory		
6.1.1	Flow regulator set	45 220	1	9	6" Escutcheon	07 542	1
7	Mounting set	45 012	1				

Subject to technical modification without notice.

Care

Instructions for care of this centerset and bidet faucet, will be found in the Limited Warranty supplement.

Grohe America Inc.
241 Covington Drive
Bloomington, IL
60108
U.S.A.
Technical Services
Phone: 630/582-7711
Fax: 630/582-7722

Grohe Canada Inc.
1230 Lakeshore Road East
Mississauga, Ontario
Canada, L5E 1E9
Technical Services
Services Techniques
Phone/Tél: 905/271-2929
Fax/Télécopieur: 905/271-9494